

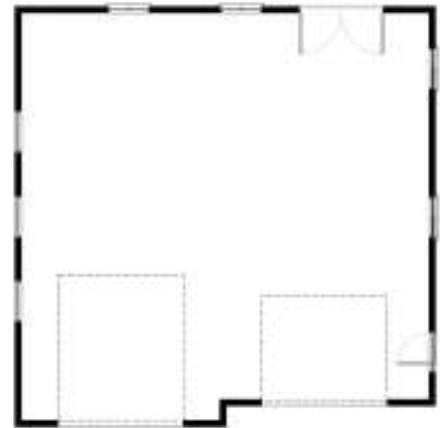


DETAILS

- 40' X 80' X 16' SHOP
- VAULTED LOFT FOR FUTURE DEN OR MAN CAVE!
- 20' X 14' OVERHEAD DOOR (OPENERS INCLUDED)
- (2) 14' X 10' OVERHEAD DOORS (WITH OPENERS)
- UNFINISHED



SADDLE MOUNTAIN HOMES

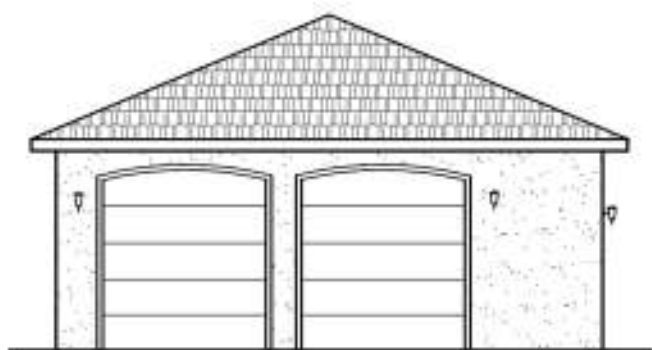
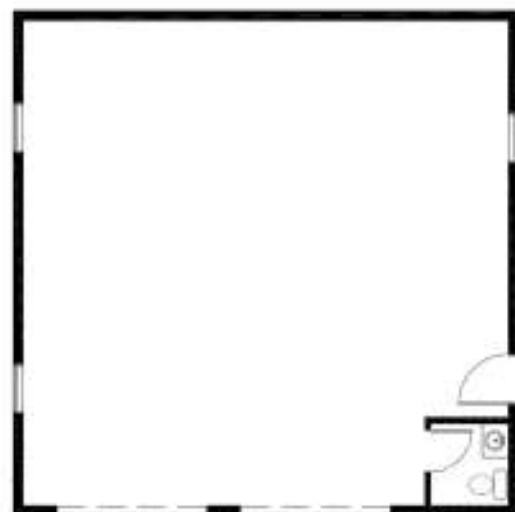


DETAILS

- **40' X 40' SHOP**
- **1,600 SQ FT**
- **FRONT SLAB APRON**
- **UNFINISHED**
- **STUCCO EXTERIOR**
- **12' X 14' OVERHEAD DOOR**
- **12' X 10' OVERHEAD DOOR**



SADDLE MOUNTAIN HOMES

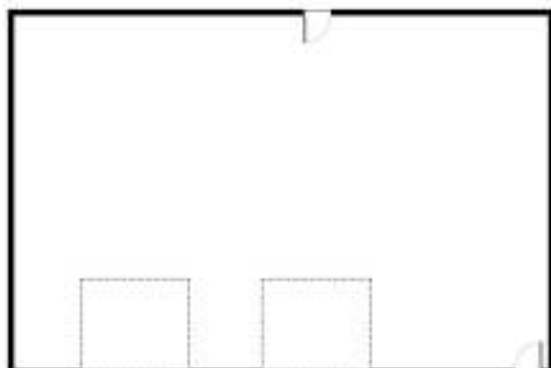


DETAILS

- 30' X 30' X 12' SHOP
- (2) 9' X 10' OVERHEAD DOORS (WITH OPENERS)
- POWDER BATHROOM
- FULLY FINISHED
- HEATING AND AIR CONDITIONING
- STUCCO EXTERIOR FINISH



SADDLE MOUNTAIN HOMES

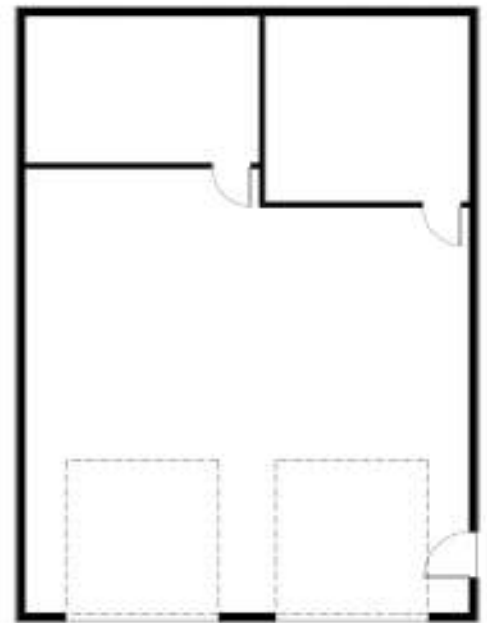


DETAILS

- 40' X 60' X 12'
- 2400 SQ FT
- (2) 12' X 10' OVERHEAD DOORS
- SIDING
- FINISHED OR UNFINISHED INTERIOR



SADDLE MOUNTAIN HOMES

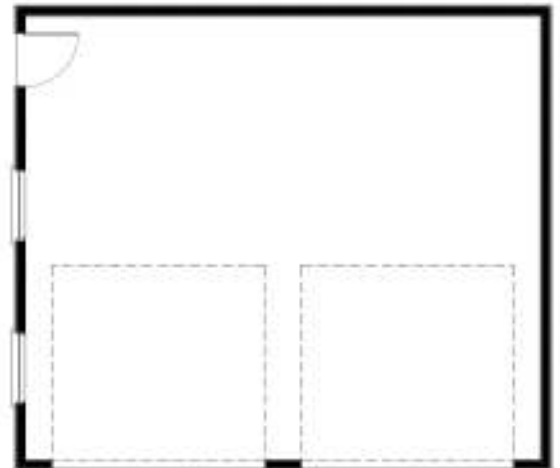


DETAILS

- **30' X 40' X 12' SHOP**
- **FULLY FINISHED WITH DRYWALL**
- **STUCCO EXTERIOR**
- **1200 SQ FT**



SADDLE MOUNTAIN HOMES



DETAILS

- 30' X 26' X 12' SHOP
- ELECTRICAL ROUGHED IN
- (2) 12' X 11' OVERHEAD DOORS
- LAP SIDING



SADDLE MOUNTAIN HOMES